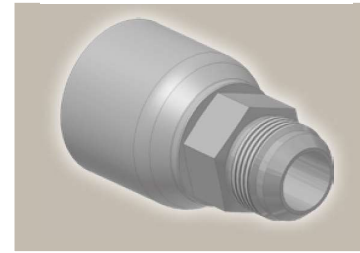
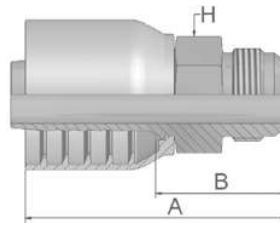


### 03 Male JIC 37° – Rigid Straight

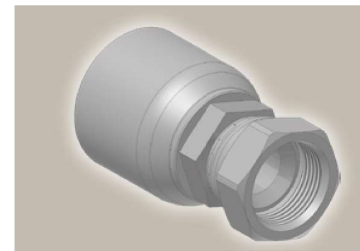
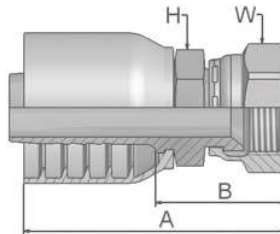
ISO12151-5-S – AGJ



Part Number	Hose I.D.				Thread UNF	A mm	B mm	H mm
	DN	Inch	Size	mm				
10343-6-6	10	3/8	-6	9.5	9/16x18	57	31	3/4
10343-8-6	10	3/8	-6	9.5	3/4x16	58	32	7/8

### 06 Female JIC 37° – Swivel Straight

ISO12151-5-SWS – DKJ



Part Number	Hose I.D.				Thread UNF	A mm	B mm	H mm Inch	W mm Inch
	DN	Inch	Size	mm					
10643-6-6	10	3/8	-6	9.5	9/16x18	58	32	11/16	11/16
10643-8-6	10	3/8	-6	9.5	3/4x16	63	37	11/16	7/8
10643-8-8*	12	1/2	-8	12.7	3/4x16	66	34	13/16	7/8
10643-10-8	12	1/2	-8	12.7	7/8x14	72	40	7/8	1
10643-10-10*	16	5/8	-10	15.9	7/8x14	73	38	15/16	1
10643-12-10	16	5/8	-10	15.9	1 1/16x12	79	42	1 1/16	1 1/4
10643-12-12	19	3/4	-12	19.1	1 1/16x12	81	44	1 1/16	1 1/4
10643-14-12	19	3/4	-12	19.1	1 3/16x12	81	44	1 1/4	1 3/8
10643-12-16	25	1	-16	25.4	1 1/16x12	84	42	1 3/8	1 1/4
10643-16-16	25	1	-16	25.4	1 5/16x12	92	51	1 3/8	1 1/2

\* These fittings contain a dual seat that accepts both JIC (37°) and SAE (45°) male configurations.

Approved **fitting series** for hose types, depending on size: Also available in stainless steel. Details can be found in CAT 4400.1/UK

43	304	387	387ST	387TC	421WC	426	487	487ST	487TC	722	722TC	722ST	...
	787	787TC	787ST	797	797TC	797ST	881						